

jura®



E8/E80 Instructions for Use

Your E8/E80

Control elements	4
Important information	6
Proper use	6
For your safety	6
1 Preparing and using for the first time	10
JURA on the Internet.....	10
Setting up the machine	10
Filling the bean container.....	10
Determining the water hardness	10
First-time use	11
Connecting milk	14
2 Preparation	15
Latte macchiato, cappuccino and other speciality coffees with milk	15
Ristretto, espresso and coffee.....	16
Two ristretti, two espressi and two coffees	16
Milk foam.....	17
Ground coffee	17
Permanently setting the amount of water for the cup size	18
Adjusting the grinder	19
Hot water.....	19
3 Daily operation	20
Filling the water tank.....	20
Switching on the machine.....	20
Daily maintenance	20
Regular maintenance	21
Switching off the machine.....	21
4 Permanent settings in programming mode	22
Adjusting the product settings.....	22
Automatic switch-off	23
Setting the water hardness	24
Milk system rinsing.....	24
Unit for amount of water.....	25
Language	25
5 Maintenance	26
Rinsing the machine.....	26
Rinsing the fine foam frother.....	26
Cleaning the fine foam frother	27
Dismantling and rinsing the professional fine foam frother.....	28
Dismantling and rinsing the fine foam frother.....	29
Inserting the filter	29
Changing the filter.....	30
Cleaning the machine	31

Descaling the machine	32
Cleaning the bean container.....	34
Descaling the water tank	34
6 Display messages	35
7 Troubleshooting	36
8 Transport and environmentally friendly disposal	38
Transport / Emptying the system.....	38
Disposal.....	38
9 Technical data	39
10 Index	40
11 JURA contact details / Legal information	44

Symbol description

Warnings

⚠ WARNING	Always take note of any information marked with the words CAUTION or
⚠ CAUTION	WARNING and a warning sign. The signal word WARNING draws your attention to potential serious injury, and the signal word CAUTION to potential minor injury.
CAUTION	CAUTION draws your attention to potential damage to the machine.

Symbols used


▶	Prompt to take action. This symbol means that you are being prompted to perform some action.
i	Information and tips to make it even easier to use your JURA.
'Coffee'	Display

Control elements

Control elements



- 1 Filler funnel cover
- 2 Filler funnel for ground coffee
- 3 Bean container with aroma preservation cover
- 4 Water tank cover
- 5 Water tank
- 6 Mains cable (back of the machine)
- 7 Coffee grounds container
- 8 Drip tray

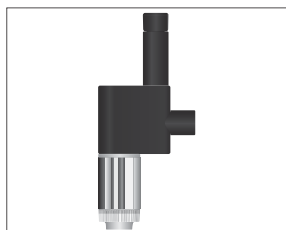
- 9 Cover cap for grinder adjustment switch
- 10 Grinder adjustment switch
- 11 On/Off button 
- 12 Connector System® with professional fine foam frother
- 13 Height-adjustable coffee spout
- 14 Cup grille



1 Display

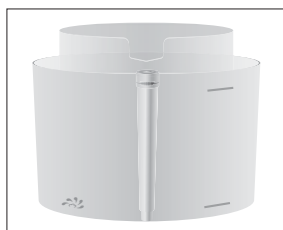
2 Multi-function buttons (button function depends on what is shown in the display)

Fine foam frother (used in different model variants)

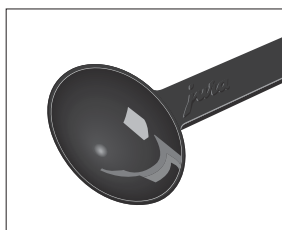


Accessories

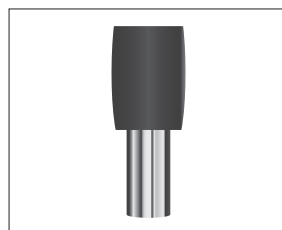
Container for milk system cleaning



Measuring spoon for ground coffee



Hot-water nozzle



Important information

Proper use

The machine is designed and intended for private domestic use. It should only be used for coffee preparation and to heat milk and water. Use for any other purpose will be deemed improper. JURA Elektroapparate AG cannot accept any responsibility for the consequences of improper use.

Before using the machine read these instructions for use thoroughly and completely and comply with the instructions they contain. A warranty service is not applicable for damage or defects caused by non-compliance with the instructions for use. Keep these instructions for use close to the machine and pass them on to the next user.

For your safety



Please carefully read and observe the important safety information set out below.

To avoid danger of potentially fatal electric shock:

- Never use a machine which is damaged or has a defective mains cable.
- In the event of signs of damage, for example if there is a smell of burning, unplug the machine immediately from the mains supply and contact JURA service.
- For models with a permanently connected mains cable: If the mains cable of this machine is damaged, it must be repaired either directly by JURA or by an authorised JURA service centre.
- For models with a disconnectable mains cable: If the mains cable of this machine is damaged it must be replaced with a special mains cable,

which is available directly from JURA or from authorised JURA service centres.

- Make sure that the JURA and the mains cable are not located close to hot surfaces.
- Be careful to ensure that the mains cable is not trapped and does not rub against sharp edges.
- Never open and repair the machine yourself. Do not modify the machine in any way that is not described in these instructions for use. The machine contains live parts. If opened, there is a danger of potentially fatal injury. Repairs may only be carried out by authorised JURA service centres, using original spare parts and accessories.
- To completely and safely disconnect the machine from the power supply, first switch off the JURA using the On/Off button. Only then should you remove the mains plug from the power socket.

There is a risk of scalds or burns on the spouts and fine foam frother:

- Place the machine out of the reach of children.
- Do not touch any hot parts. Use the handles provided.
- Be careful to ensure that the fine foam frother is correctly installed and clean. If incorrectly fitted or if it becomes blocked, the fine foam frother or its parts might come off.

A defective machine is not safe and could cause injury or fire. To avoid damage and any associated risk of injury or fire:

- Never allow the mains cable to loosely hang down. The mains cable could pose a tripping hazard or become damaged.

Important information

- Protect the JURA from environmental influences such as rain, frost and direct sunlight.
- Do not immerse the JURA, mains cable or connections in water.
- Do not put the JURA or any individual parts in the dishwasher.
- Before cleaning, switch your JURA off with the On/Off button. Always wipe the JURA with a damp cloth rather than a wet one, and protect it from prolonged exposure to water splash.
- Only connect the machine to the mains voltage in accordance with the information on the rating plate. The rating plate is located on the underside of your JURA. Further technical data is provided in these instructions for use (see Chapter 9 'Technical data').
- Connect the JURA directly to a domestic power socket. Using multi-socket adapters or extension cords may cause overheating.
- Please only use original JURA maintenance products. Use of products that are not explicitly recommended by JURA could damage the JURA.
- Do not use alkaline cleaning agents when cleaning, use a soft cloth and a mild detergent.
- Do not use any coffee beans treated with additives or caramelised coffee beans.
- Only fill the water tank with fresh, cold water.
- Switch the machine off with the On/Off button if you are going to be absent for a longer period of time and remove the mains plug from the power socket.
- Children may not clean or service the machine unless supervised by a responsible person.

- Do not allow children to play with the machine.
- Keep children under the age of 8 away from the machine, or supervise them constantly.
- Children aged 8 and over may only operate the machine without supervision if they have been instructed in how to use it safely. Children must be able to recognise and understand the potential dangers arising from incorrect use.

People, including children, who

- do not have the physical, sensory or mental capabilities to use the machine safely or
- are inexperienced or lack knowledge in how to use the machine safely

must be supervised by a responsible person when using it, or must be instructed in how to use it correctly.

Safety when handling the CLARIS Smart filter cartridge:

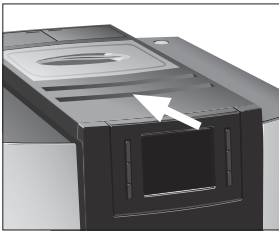
- Filter cartridges should be kept out of the reach of children.
- Store filter cartridges in a dry place in the sealed packaging.
- Protect cartridges from heat and direct sunlight.
- Do not use damaged filter cartridges.
- Do not open filter cartridges.

1 Preparing and using for the first time

JURA on the Internet

Visit us on the Internet. You can download **short operating instructions** for your machine from the JURA website (www.jura.com). You will also find interesting and up-to-date information on your JURA and on every aspect of coffee.

Setting up the machine



When setting up your JURA, please note the following:

- Place the JURA on a horizontal surface that is not sensitive to water.
- Choose a spot for your JURA which protects the machine against overheating. Ensure that the ventilation slots are not covered.

Filling the bean container

CAUTION

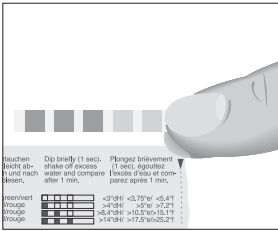
Coffee beans which have been treated with additives (e.g. sugar), ground coffee or freeze-dried coffee will damage the grinder.

- ▶ Only use roasted, untreated coffee beans to fill the bean container.
-
- ▶ Remove the aroma preservation cover.
 - ▶ Remove any dirt or foreign objects from inside the bean container.
 - ▶ Fill the bean container with coffee beans and close the aroma preservation cover.

Determining the water hardness

When you use the machine for the first time, you must set the water hardness. If you do not know the hardness of your water, you can find this out first. Use the Aquadur® test strips supplied with the machine.

- ▶ Hold the test strip briefly (for 1 second) under flowing water. Shake off the water.
- ▶ Wait for about 1 minute.



- ▶ You will then be able to read the degree of water hardness from the discolouration of the Aquadur® test strip and the description on the packaging.

First-time use


When using the machine for the first time, you can choose whether you want to operate JURA **with** or **without** the CLARIS Smart filter cartridge. If the water hardness is 10 °dH or more, we recommend using the filter cartridge.

⚠ WARNING

If the machine is operated with a defective mains cable, there is a danger of potentially fatal electric shock.

- ▶ Never use a machine which is damaged or has a defective mains cable.

Precondition: The bean container has been filled.

- ▶ Insert the mains plug into a power socket.
- ▶ Press the On/Off button  to switch the JURA on.

‘Sprachauswahl’

- i** To display more languages, press the ‘>’ button (bottom right).

- ▶ Press the button that corresponds to the language you want, e.g. ‘English’.

‘Saved’ appears briefly on the display to confirm the setting.
‘Water hardness’

- i** If you do not know the hardness of your water, you must find this out first (see Chapter 1 ‘Preparing and using for the first time – Determining the water hardness’).

- ▶ Press the ‘<’ or ‘>’ button to change the water hardness setting, for example to ‘25 °dH’.

- ▶ Press the ‘Save’ button.

‘Saved’ appears briefly on the display.

‘Use filter’

1 Preparing and using for the first time

- i** Now decide whether you want to operate your JURA **with** or **without** a CLARIS Smart filter cartridge.

Operation **with** filter cartridge: go straight to the next section (see Chapter 1 'Preparing and using for the first time – First-time use with filter cartridge activation').

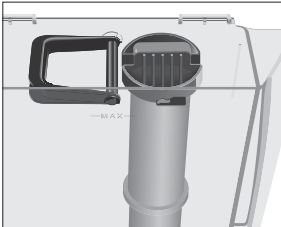
Operation **without** filter cartridge (see Chapter 1 'Preparing and using for the first time – First-time use without filter cartridge activation').

First-time use with filter cartridge activation

CAUTION

Milk, sparkling mineral water or other liquids can damage the water tank or the machine.

- ▶ Only fill the water tank with fresh, cold water.



- ▶ Place a receptacle (at least 300 ml) under the fine foam frother.
- ▶ Remove the water tank and rinse it with cold water.
- ▶ Fit the filter cartridge extension supplied on top of a CLARIS Smart filter cartridge.

- ▶ Insert the filter cartridge with its extension into the water tank.
- ▶ Turn the filter cartridge clockwise until it audibly clicks into place.
- ▶ Fill the water tank with fresh, cold water and reinsert the tank.

- i** The machine automatically detects that you have just inserted the filter cartridge.

'Use filter' / 'Saved'

'Filter is being rinsed', water flows out of the fine foam frother.

Rinsing of the filter stops automatically after approximately 300 ml.

'System is filling', the system fills up with water.

'Empty drip tray'

- ▶ Empty the drip tray and coffee grounds container and put them back into the machine.

'Machine is rinsing', the system is rinsed. Water flows out of the coffee spout. The rinse stops automatically. Your JURA is ready for use.

i The start screen shows the products you can prepare. Press the '>' button to display more products.

i If the filter is active, this is indicated by a blue filter symbol at the bottom of the display.

First-time use without filter cartridge activation

CAUTION

Milk, sparkling mineral water or other liquids can damage the water tank or the machine.

- ▶ Only fill the water tank with fresh, cold water.

- ▶ Press the 'No filter' button.

'Saved' appears briefly on the display.

'Fill water tank'

- ▶ Place one receptacle under the coffee spout and another under the fine foam frother.



- ▶ Remove the water tank and rinse it with cold water.

- ▶ Fill the water tank with fresh, cold water and reinsert the tank.

'System is filling', the system fills up with water.

'Machine is heating'

'Machine is rinsing', water flows out of the coffee spout. The rinse stops automatically. Your JURA is ready for use.

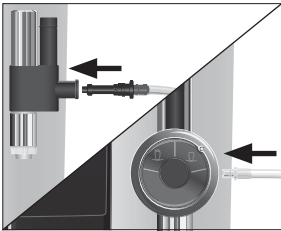
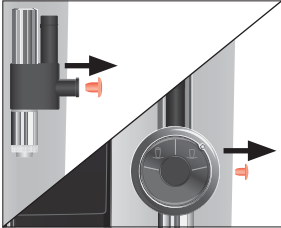
1 Preparing and using for the first time

- i** The start screen shows the products you can prepare. Press the '>' button to display more products.

Connecting milk

Your JURA creates fine, creamy, feather-light milk foam with a perfect consistency. The most important requirement for frothing milk is a milk temperature of 4–8 °C. We would therefore recommend using a milk cooler or a vacuum milk container.

- ▶ Remove the protective cover from the fine foam frother.



- ▶ Connect the milk pipe to the fine foam frother.
- ▶ Connect the other end of the milk pipe to a milk container or immerse it in a milk carton.

2 Preparation

- i** The display shows four products you can prepare. Press the ‘>’ button to display more products.
- i** You can stop the machine at any time while a speciality coffee or hot water is being prepared. Just press any button.
- i** During the grinding operation you can select the coffee strength of **single products** by pressing the ‘<’ and ‘>’ buttons.
- i** During preparation you can change the preset **amounts** (e.g. water and amount of milk) by pressing the ‘<’ and ‘>’ buttons.

Coffee tastes best served hot. A cold porcelain cup cools the beverage – and impairs the taste. We therefore recommend prewarming the cups. The full coffee aroma can develop only in prewarmed cups. You can purchase a JURA cup warmer from your specialised dealer.

You can make **permanent settings** for all products in programming mode (see Chapter 4 ‘Permanent settings in programming mode – Adjusting the product settings’).

Latte macchiato, cappuccino and other speciality coffees with milk


Your JURA prepares latte macchiato, cappuccino and flat white at the touch of a button. There is no need to move the glass or cup.

- i** This chapter applies to the **professional fine foam frother** and the **fine foam frother**.

Example: Proceed as follows to prepare one latte macchiato.

Precondition: The speciality coffees with milk are displayed. Milk is connected to the fine foam frother.

- ▶ Place a glass under the fine foam frother.

- i** If you are using the **professional fine foam frother**, turn the selector switch to the Milk Foam position .

- ▶ Press the ‘Latte macchiato’ button.

‘Latte macchiato’ appears and the preset amount of milk foam flows into the glass.



- i** There is a short interval while the hot milk separates from the milk foam. This allows the typical layers of a latte macchiato to form. You can choose the length of this interval in programming mode (see Chapter 4 'Permanent settings in programming mode – Adjusting the product settings').

Coffee preparation starts. The preset amount of water for espresso flows into the glass. Preparation stops automatically. Your JURA is once more ready for use.

To ensure that the fine foam frother always works properly, you must clean it **daily** when you have been preparing milk (see Chapter 5 'Maintenance – Cleaning the fine foam frother').

Ristretto, espresso and coffee



Example: Proceed as follows to prepare one coffee.

Precondition: The speciality coffees are displayed.

- ▶ Place a cup under the coffee spout.
- ▶ Press the 'Coffee' button.

Preparation starts. 'Coffee' and the coffee strength are displayed. The preset amount of water for coffee flows into the cup.

Preparation stops automatically. Your JURA is once more ready for use.

Two ristretti, two espressi and two coffees



To prepare **two** speciality coffees, press the appropriate preparation button twice (within approximately 1 second).

Example: Proceed as follows to prepare two espressi.

Precondition: The speciality coffees are displayed.

- ▶ Place two cups under the coffee spout.
- ▶ Press the 'Espresso' button **twice (within 1 second)** to start preparation.

'2 espressi' appears and the preset amount of water flows into the cups.

Preparation stops automatically. Your JURA is once more ready for use.

Milk foam





i This chapter applies to the **professional fine foam frother** and the **fine foam frother**.

Example: Proceed as follows to prepare milk foam.

Precondition: The speciality coffees with milk are displayed. Milk is connected to the fine foam frother.

► Place a cup under the fine foam frother.

i If you are using the **professional fine foam frother**, turn the selector switch to the Milk Foam position .

i If you want to **heat the milk** turn the setting wheel of the professional cappuccino frother to the Milk position .

► Press the **'Milk foam'** button.

The milk foam is prepared. The preset amount of milk flows into the cup.

Preparation stops automatically. Your JURA is once more ready for use.

To ensure that the fine foam frother always works properly, you must clean it **daily** when you have been preparing milk (see Chapter 5 'Maintenance – Cleaning the fine foam frother').

Ground coffee

You can choose to use a second coffee variety, for example decaffeinated coffee, with the filter funnel for ground coffee.

i Never add more than two level measuring spoons of ground coffee.

i Use ground coffee which is not ground too finely. Very fine coffee can block up the system so that the coffee only comes out in drips.

i If you did not fill the machine with a sufficient amount of ground coffee, **'Not enough ground coffee'** is displayed and the JURA stops the operation.

i The desired speciality coffee must be prepared within approximately one minute after filling with the ground coffee. Otherwise the JURA stops the operation and is once more ready for use.

All speciality coffees with ground coffee are always prepared following the same model.

2 Preparation



Permanently setting the amount of water for the cup size



Example: Proceed as follows to prepare one espresso using ground coffee.

Precondition: The speciality coffees are displayed.

- ▶ Place an espresso cup under the coffee spout.
- ▶ Open the powder chute cover.
'Ground coffee' / 'Please add ground coffee'
- ▶ Place one level measuring spoon of ground coffee into the filler funnel.
- ▶ Close the cover of the filler funnel.
- ▶ Press the 'Espresso' button.

Preparation starts. 'Espresso' appears and the preset amount of water for espresso flows into the cup.

Preparation stops automatically. Your JURA is once more ready for use.

It is easy to permanently adjust the amount of water for all **single products** to the cup size. Adjust the amount once as shown in the following example. Every time you prepare a drink in the future, this amount will be dispensed.

Example: Proceed as follows to **permanently** set the amount of water for one coffee.

Precondition: The speciality coffees are displayed.

- ▶ Place a cup under the coffee spout.
- ▶ Press and **hold** the 'Coffee' button until 'Enough coffee? Press button' appears.
- ▶ Release the 'Coffee' button.

Preparation starts and the coffee flows into the cup.

- ▶ Press any button except 'Cancel' as soon as there is sufficient coffee in the cup.

Preparation stops. 'Saved' appears briefly on the display. The set amount of water for one coffee is permanently stored. Your JURA is once more ready for use.

i You can alter this setting at any time by repeating the above procedure.

i You can also permanently set the amounts for all single products in programming mode (see Chapter 4 'Permanent settings in programming mode – Adjusting the product settings').

Adjusting the grinder

You can adjust the grinder on a continuous scale to suit the degree of roast of your coffee.

CAUTION

If you adjust the consistency of grind when the grinder is not operating, the grinder adjustment switch could be damaged.

- ▶ Only adjust the consistency of grind when the grinder is running.

The consistency of grind is correct if the coffee flows regularly from the coffee spout. In addition a fine, thick crema forms.

Example: Proceed as follows to change the consistency of grind **during** the preparation of an espresso.

- ▶ Place a cup under the coffee spout.
- ▶ Open the cover of the grinder adjustment switch.
- ▶ Press the 'Espresso' button to start preparation.
- ▶ Turn the grinder adjustment switch to the desired position **while** the grinder is running.
The preset amount of water flows into the cup. Preparation stops automatically.
- ▶ Close the cover of the grinder adjustment switch.



Hot water

To obtain a perfect water flow, use the hot-water nozzle.

⚠ CAUTION

There is a danger of scalding from hot water splashes.

- ▶ Avoid direct contact with the skin.

Precondition: The speciality coffees are displayed.

- ▶ Place a cup under the hot-water nozzle.
- ▶ Press the 'Hot water' button.
'Hot water', the preset amount of water flows into the cup. Preparation stops automatically. Your JURA is once more ready for use.



3 Daily operation

Filling the water tank

Daily maintenance of the machine and hygiene when handling milk, coffee and water are key to a perfect coffee result in the cup every time. You should therefore change the water **daily**.

CAUTION

Milk, sparkling mineral water or other liquids can damage the water tank or the machine.


- ▶ Only fill the water tank with fresh, cold water.



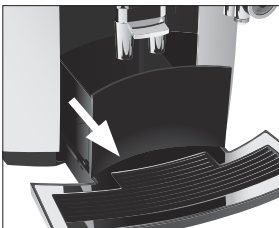
- ▶ Open the water tank cover.
- ▶ Remove the water tank and rinse it with cold water.
- ▶ Fill the water tank with fresh, cold water and reinsert the tank.
- ▶ Close the water tank cover.

Switching on the machine



- ▶ Place a receptacle under the coffee spout.
- ▶ Press the On/Off button  to switch the JURA on.
'Welcome to JURA'
'Machine is heating'
'Machine is rinsing', the system is rinsed. The rinse stops automatically. Your JURA is ready for use.

Daily maintenance



To ensure that you get many years of reliable service out of your JURA and to guarantee the optimum coffee quality, the machine requires daily maintenance.

- ▶ Pull out the drip tray.
- ▶ Empty the coffee grounds container and the drip tray. Rinse them both with warm water.

i Always empty the coffee grounds container when the machine is **switched on**. This is the only way of resetting the coffee grounds counter.

- ▶ Refit the coffee grounds container and the drip tray.
- ▶ Rinse the water tank with clean water.

- ▶ Clean the fine foam frother (see Chapter 5 ‘Maintenance – Cleaning the fine foam frother’).
- ▶ Remove the milk pipe and rinse it thoroughly under running water.
- ▶ Dismantle and rinse the fine foam frother (see Chapter 5 ‘Maintenance – Dismantling and rinsing the professional fine foam frother’).
- ▶ Wipe the surface of the machine with a clean, soft, damp cloth (e.g. microfibre cloth).

Regular maintenance


Carry out the following maintenance actions **regularly** or **as required**:

- In the interests of hygiene, we recommend changing the milk pipe and interchangeable milk spout on a regular basis (approximately every 3 months). Replacements are available from specialised dealers.
- Clean the inside of the water tank, e.g. with a brush. Further information about the water tank is provided in these instructions for use (see Chapter 5 ‘Maintenance – Descaling the water tank’).
- Traces of milk and coffee may stick to the top and bottom of the cup grille. If this happens, clean the cup grille.

Switching off the machine



When the JURA is switched off, the system is automatically rinsed if a speciality coffee has been prepared. If milk has been prepared, you will also be prompted to clean the milk system.

- ▶ Place a receptacle under the fine foam frother and under the coffee spout.
- ▶ Press the On/Off button .

i If milk has been prepared, you will be prompted to clean the milk system (**‘Clean the milk system’**). After 10 seconds the switch-off process continues automatically.

If milk has been prepared but you have not started milk system cleaning, the milk system is rinsed first (**‘Milk system is being rinsed’**).

‘Machine is rinsing’, the system rinses itself. The operation stops automatically. Your JURA is switched off.

4 Permanent settings in programming mode

Press the 'P.' button to enter programming mode. You can navigate through the programme items and permanently save the required settings using the multi-function buttons. The following settings can be made:

Programme item	Sub-item	Explanation
'1/5'	'Clean', 'Descale', 'Clean the milk system', 'Filter' (only if filter is activated)	▶ Start the required maintenance programme here.
'2/5'	'Rinse the milk system', 'Rinse the coffee system', 'Information'	▶ Here you can start the required maintenance programme or find out what maintenance actions are required.
'3/5'	'Expert mode'	▶ Select your settings for speciality coffees and hot water.
'4/5'	'Choose language'	▶ Select your language.
	'Units'	▶ Select the unit for the amount of water.
	'Switch off after'	▶ Set the time after which the JURA should switch off automatically.
	'Rinse the milk system'	▶ Change the setting for the milk system rinsing.
'5/5'	'Water hardness'	▶ Adjust the water hardness.

Adjusting the product settings

In the programme item 'Expert mode' you can make individual settings for all speciality coffees and hot water. The following permanent settings can be made:

Product	Coffee strength	Amount	Temperature
Ristretto, espresso	8 levels	Coffee: 15 ml – 80 ml	normal, high
Coffee	8 levels	Coffee: 25 ml – 240 ml	normal, high
2 ristretti, 2 espressi, 2 coffees	–	Coffee: the amount set for the single product is doubled.	as for single product
Cappuccino, Flat white	8 levels	Coffee: 25 ml – 240 ml Milk: 3 sec. – 120 sec.	normal, high

Product	Coffee strength	Amount	Temperature
Latte macchiato	8 levels	Coffee: 25 ml – 240 ml Milk: 3 sec. – 120 sec. Interval: 0 sec. – 60 sec.	normal, high
Portion of milk	–	Milk: 3 sec. – 120 sec.	–
Hot water	–	Water: 25 ml – 450 ml	low, normal, high

Permanent settings in programming mode always follow the same model.

Example: Proceed as follows to change the coffee strength for one coffee.

- ▶ Press the 'P:☼' button.
- ▶ Press the '>' button several times until '3/5' is displayed.
- ▶ Press the 'Expert mode' button.
'Expert mode'

- i** Next select the button of the product for which you would like to make settings. No product is prepared at this point.
- i** To display more products, press the '>' button (bottom right).

- ▶ Press the 'Coffee' button.
'Coffee'
- ▶ Press the 'Coffee strength' button.
'Coffee' appears and the coffee strength is displayed.
- ▶ Press the '<' or '>' button to change the setting for the coffee strength.
- ▶ Press the 'Save' button.
'Saved' appears briefly on the display.
'Coffee'
- ▶ Press the 'L' button for **around 2 seconds** to exit programming mode.

Automatic switch-off

By instructing your JURA to automatically switch itself off, you can cut down your energy consumption. If this function is activated, your JURA switches off automatically after the preset time following the last action on the machine.

You can set the automatic switch-off to 15 minutes, 30 minutes or 1–9 hours.

4 Permanent settings in programming mode

- ▶ Press the 'P:⚙️' button.
- ▶ Press the '>' button several times until '4/5' is displayed.
- ▶ Press the 'Switch off after' button.
'Switch off after'
- ▶ Press the '<' or '>' button to change the switch-off time.
- ▶ Press the 'Save' button.
'Saved' appears briefly on the display.
'4/5'
- ▶ Press the 'L' button to exit programming mode.

Setting the water hardness

The harder the water is, the more frequently the JURA needs to be descaled. It is therefore important to set the water hardness accurately.

The water hardness was set when the machine was first used. You can change this setting at any time.

The water hardness can be adjusted on a continuous scale between 1 °dH and 30 °dH.

- ▶ Press the 'P:⚙️' button.
- ▶ Press the '>' button several times until '5/5' is displayed.
- ▶ Press the 'Water hardness' button.
'Water hardness'
- ▶ Press the '<' or '>' button to change the setting for the water hardness.
- ▶ Press the 'Save' button.
'Saved' appears briefly on the display.
'5/5'
- ▶ Press the 'L' button to exit programming mode.

Milk system rinsing

In the programme item '4/5' / 'Rinse the milk system' you can make the following settings:

- 'Manual': You are prompted to perform milk system rinsing 10 minutes after preparation of a speciality coffee with milk.
- 'Automatic': The milk system rinsing is automatically initiated 10 minutes after preparation of a speciality coffee with milk.

Example: Proceed as follows to set the milk system rinsing to be initiated **automatically** 10 minutes after the preparation.

- ▶ Press the 'P:⚙️' button.
- ▶ Press the '>' button several times until '4/5' is displayed.
- ▶ Press the 'Rinse the milk system' button.
'Rinse the milk system'
- ▶ Press the 'Automatic' button.
- ▶ Press the 'Save' button.
'Saved' appears briefly on the display.
'4/5'
- ▶ Press the 'L' button to exit programming mode.

Unit for amount of water

Example: Proceed as follows to change the unit for the amount of water from 'ml' to 'oz'.

- ▶ Press the 'P:⚙️' button.
- ▶ Press the '>' button several times until '4/5' is displayed.
- ▶ Press the 'Units' button.
'Units'
- ▶ Press the 'oz' button.
- ▶ Press the 'Save' button.
'Saved' appears briefly on the display.
'4/5'
- ▶ Press the 'L' button to exit programming mode.

Language

Example: Proceed as follows to change the language from 'English' to 'Deutsch'.

- ▶ Press the 'P:⚙️' button.
- ▶ Press the '>' button several times until '4/5' is displayed.
- ▶ Press the 'Choose language' button.
'Choose language'
- i** To display more languages, press the '>' button (bottom right).
- ▶ Press the button that corresponds to the language you want, e.g. 'Deutsch'.
'Gespeichert' appears briefly on the display.
'4/5'
- ▶ Press the 'L' button to exit programming mode.

5 Maintenance

Your JURA has the following integrated maintenance programmes:

- Rinsing the machine ('Rinse the coffee system')
- Rinsing the fine foam frother ('Rinse the milk system')
- Cleaning the fine foam frother ('Clean the milk system')
- Changing the filter ('Change the filter')
- Cleaning the machine ('Clean')
- Descaling the machine ('Descale')

i Carry out each maintenance programme when you are prompted to do so.

i Press the 'P❖❖' button to view a list of the maintenance programmes. When the bar is completely filled with red, your JURA will prompt you to perform the appropriate maintenance programme.

Rinsing the machine



You can start coffee system rinsing manually at any time.

- ▶ Place a receptacle under the coffee spout.
- ▶ Press the 'P❖❖' button.
- ▶ Press the '>' button.
- ▶ Press the 'Rinse the coffee system' button to start the rinse operation.

'Machine is rinsing', water flows out of the coffee spout. The operation stops automatically.

Rinsing the fine foam frother

i This chapter applies to the **professional fine foam frother** and the **fine foam frother**.

After each milk preparation, the JURA prompts you to perform a milk system rinse.

i In programming mode, you can set whether the milk system rinsing is to be prompted 10 minutes after preparation or initiated automatically (see Chapter 4 'Permanent settings in programming mode – Milk system rinsing').



Cleaning the fine foam frother

Precondition: 'Rinse the milk system' is displayed.

- ▶ Place a receptacle under the fine foam frother.
- ▶ Press the 'P☼' button.
- ▶ Press the '>' button.
- ▶ Press the 'Rinse the milk system' button to start the rinse operation.

'Milk system is being rinsed' appears and the fine foam frother is rinsed. The operation stops automatically.

i This chapter applies to the **professional fine foam frother** and the **fine foam frother**.

To ensure that the fine foam frother always works properly, you must clean it **daily** when you have been preparing milk.

CAUTION

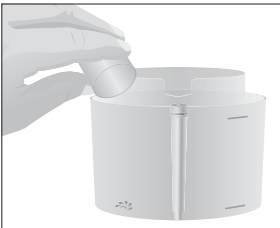
If the wrong cleaning agent is used, the machine could be damaged and/or traces could be left behind in the water.

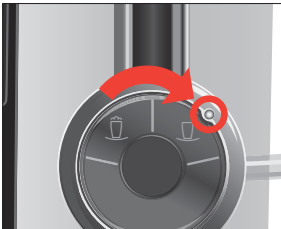
- ▶ Use only original JURA maintenance products.

i JURA milk system cleaner is available from specialised dealers.

i To clean the milk system, use the container supplied.

- ▶ Press the 'P☼' button.
- ▶ Press the 'Clean the milk system' button.
- ▶ Press the 'Start' button.
- ▶ Press the 'Next' button.
- ▶ Remove the milk pipe from the milk container or carton.
- ▶ Add milk system cleaner to the front part of the container up to the **bottom mark** (indicated by ☼☼).
- ▶ Then fill with water up to the **upper mark**.
- ▶ Place the container under the fine foam frother.
- ▶ If you are using the **professional fine foam frother**, set the setting wheel to the Milk Foam position ☼.






- ▶ Connect the milk pipe to the container.

i To connect the milk pipe to the container correctly, the pipe must be fitted with a connector.

- ▶ Press the 'Next' button.

'Milk system is being cleaned' appears and the fine foam frother and the milk pipe are cleaned.

- ▶ During the first brief interruption, set the setting wheel of the professional fine foam frother to the Milk position .

'Clean the milk system'

- ▶ Rinse the container thoroughly and fill the front part with 250 ml of fresh water.

- ▶ Place this under the fine foam frother and reconnect the milk pipe to the container.

- ▶ Press the 'Next' button.

'Milk system is being cleaned' appears and the fine foam frother and the milk pipe are rinsed with fresh water.

The start screen is displayed.

Dismantling and rinsing the professional fine foam frother

To make sure the professional fine foam frother works properly, and in the interests of hygiene, it must be dismantled and rinsed **daily** if you have been preparing milk. Your JURA will not prompt you to dismantle and rinse the professional fine foam frother.

- ▶ Remove the milk pipe and rinse it thoroughly under running water.

- ▶ Carefully remove the professional fine foam frother from the Connector System[®] by twisting slightly.

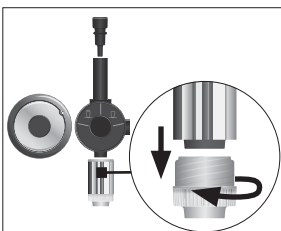
- ▶ Dismantle the professional fine foam frother into its individual parts.

- ▶ Rinse all the parts under running water. If there are severely dried-on milk residues, firstly immerse the individual parts in a solution of 250 ml cold water and 1 capful of JURA milk system cleaner. Then rinse the parts thoroughly.

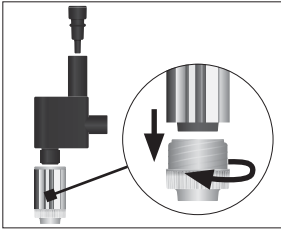
- ▶ Re-assemble the professional fine foam frother.

i Ensure that all individual parts are correctly and firmly connected to ensure optimum operation of the professional fine foam frother.

- ▶ Firmly attach the professional fine foam frother to the Connector System[®].



Dismantling and rinsing the fine foam frother



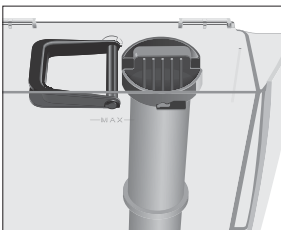
To make sure the fine foam frother works properly, and in the interests of hygiene, it must be dismantled and rinsed **daily** if you have been preparing milk. Your JURA will not prompt you to dismantle and rinse the frother.

- ▶ Remove the milk pipe and rinse it thoroughly under running water.
- ▶ Carefully remove the fine foam frother from the Connector System® by twisting slightly.
- ▶ Dismantle the fine foam frother into its individual parts.
- ▶ Rinse all the parts under running water. If there are severely dried-on milk residues, firstly immerse the individual parts in a solution of 250 ml cold water and 1 capful of JURA milk system cleaner. Then rinse the parts thoroughly.
- ▶ Re-assemble the fine foam frother.

i Ensure that all individual parts are correctly and firmly connected to ensure optimum operation.

- ▶ Firmly attach the fine foam frother to the Connector System®.

Inserting the filter



Your JURA no longer has to be descaled if you are using the CLARIS Smart filter cartridge. If you did not insert the filter cartridge the first time you used the machine, you can do this now as follows.

Precondition: The start screen is displayed.

- ▶ Place a receptacle (at least 300 ml) under the fine foam frother.
- ▶ Remove and empty the water tank.
- ▶ Fit the filter cartridge extension supplied on top of a CLARIS Smart filter cartridge.
- ▶ Insert the filter cartridge with its extension into the water tank.
- ▶ Turn the filter cartridge clockwise until it audibly clicks into place.
- ▶ Fill the water tank with fresh, cold water and reinsert the tank.

- i** The machine automatically detects that you have just inserted the filter cartridge.

'Saved' appears briefly on the display.

'Filter is being rinsed', the water flows directly into the drip tray.

- i** The water may be slightly discoloured. This is not harmful to health and does not affect the taste.

Rinsing of the filter stops automatically after approximately 300 ml. The start screen is displayed.

- i** If the filter is active, this is indicated by a blue filter symbol at the bottom of the display.

Changing the filter

- i** Once the filter cartridge stops working (depending on the water hardness setting), the JURA will prompt you to change the filter.

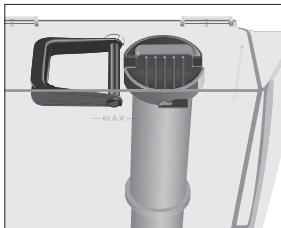
- i** CLARIS Smart filter cartridges are available from specialised dealers.

Precondition: The start screen is displayed. The filter symbol at the bottom of the display lights up red.

- ▶ Place a receptacle (at least 300 ml) under the fine foam frother.
- ▶ Remove and empty the water tank.
- ▶ Turn the filter cartridge anticlockwise and remove it along with the extension from the water tank.
- ▶ Fit the filter cartridge extension on top of a **new** CLARIS Smart filter cartridge.
- ▶ Insert the filter cartridge with its extension into the water tank.
- ▶ Turn the filter cartridge clockwise until it audibly clicks into place.
- ▶ Fill the water tank with fresh, cold water and reinsert the tank.

'Saved' appears briefly on the display. The machine has automatically detected that you have just changed the filter cartridge.

'Filter is being rinsed', the water flows directly into the drip tray.



- i** The water may be slightly discoloured. This is not harmful to health and does not affect the taste.

Rinsing of the filter stops automatically after approximately 300 ml. The start screen is displayed.

Cleaning the machine

After 180 preparations or 80 switch-on rinses, the JURA will prompt you to clean it.

CAUTION

If the wrong cleaning agent is used, the machine could be damaged and/or traces could be left behind in the water.

- ▶ Use only original JURA maintenance products.

- i** The cleaning programme lasts approximately 20 minutes.
- i** Do not interrupt the cleaning programme. The quality of cleaning will be impaired if you do so.
- i** JURA cleaning tablets are available from specialised dealers.

Precondition: 'Clean machine' is displayed.

- ▶ Press the 'P.❖' button.
- ▶ Press the 'Start' button.
- ▶ Press the 'Next' button.
'Empty coffee grounds container'
- ▶ Empty the drip tray and coffee grounds container and put them back into the machine.
'Clean'
- ▶ Place a receptacle under the coffee spout.
- ▶ Press the 'Next' button.
'Machine is being cleaned', water flows out of the coffee spout.
The operation is interrupted, 'Add cleaning tablet'.
- ▶ Open the cover of the filler funnel for ground coffee.



- ▶ Insert a JURA cleaning tablet into the filler funnel.
- ▶ Close the cover of the filler funnel.
- ▶ Press the 'Next' button.
'Machine is being cleaned', water flows out of the coffee spout several times.
The operation stops automatically.
'Empty coffee grounds container'

- ▶ Empty the drip tray and coffee grounds container and put them back into the machine.
Cleaning is now complete. The start screen is displayed.

Descaling the machine

The JURA builds up deposits of limescale over time and automatically prompts you to descale it when necessary. The degree of calcification depends on the hardness of your water.

- i** If you are using a CLARIS Smart filter cartridge, you will not be prompted to descale.

⚠ CAUTION If the descaling agent comes into contact with the skin or eyes, this can cause irritation.

- ▶ Avoid contact with the skin or eyes.
- ▶ Rinse off the descaling agent with clean water. Should you get any descaling agent in your eye, see a doctor.

CAUTION If the wrong descaling agent is used, the machine could be damaged and/or traces could be left behind in the water.

- ▶ Use only original JURA maintenance products.

CAUTION If the descaling operation is interrupted, there may be damage to the machine.

- ▶ Allow the descaling programme to run to the end.

CAUTION If the descaling agent comes into contact with sensitive surfaces (e.g. marble), damage cannot be ruled out.

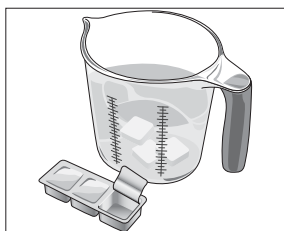
- ▶ Clean up any splashes immediately.

-
- i** The descaling programme lasts approximately 40 minutes.

- i** JURA descaling tablets are available from specialised dealers.

Precondition: 'Decalcify machine' is displayed.

- ▶ Press the 'P:⚙️' button.
- ▶ Press the 'Start' button.
- ▶ Press the 'Next' button.
'Empty drip tray'
- ▶ Empty the drip tray and coffee grounds container and put them back into the machine.
'Agent in tank'
- ▶ Remove and empty the water tank.



- ▶ Completely dissolve the contents of one blister (3 JURA descaling tablets) in a receptacle holding 500 ml of lukewarm water. This may take several minutes.
- ▶ Pour the solution into the empty water tank and insert it into the machine.



- ▶ Place a receptacle under the fine foam frother.
- ▶ Press the 'Next' button.
'Machine is being descaled' appears and water flows out of the fine foam frother repeatedly.
The operation is interrupted, 'Empty drip tray'.
- ▶ Empty the drip tray and coffee grounds container and put them back into the machine.




- ▶ 'Fill water tank'
- ▶ Remove the water tank and rinse it thoroughly.
- ▶ Fill the water tank with fresh, cold water and reinsert the tank.
- ▶ Place one receptacle under the coffee spout and another under the fine foam frother.
- ▶ Press the 'Next' button.
'Machine is being descaled', the descaling operation is continued.
The operation is interrupted, 'Empty drip tray'.
- ▶ Empty the drip tray and coffee grounds container and put them back into the machine.
Descaling is now complete. The start screen is displayed.

i If the descaling operation stops unexpectedly, rinse the water tank thoroughly.

Cleaning the bean container

Coffee beans may be covered with a slight oil film which remains on the walls of the bean container. These traces may negatively affect the coffee result. For this reason clean the bean container from time to time.

Precondition: 'Fill bean container' is displayed.

- ▶ Switch the machine off with the On/Off button .
- ▶ Remove the aroma preservation cover.
- ▶ Clean the bean container with a soft, dry cloth.
- ▶ Fill the bean container with coffee beans and close the aroma preservation cover.

Descaling the water tank

Limescale deposits may form in the water tank. To ensure correct function of the machine, descale the water tank from time to time.

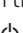
- ▶ Remove the water tank.
- ▶ If you use a CLARIS Smart filter cartridge, remove this.
- ▶ Completely fill the water tank and dissolve 3 JURA descaling tablets in it.
- ▶ Leave the water tank with the descaling solution for several hours (e.g. overnight).
- ▶ Empty the water tank and rinse it thoroughly.
- ▶ If you use a CLARIS Smart filter cartridge, insert this again.
- ▶ Fill the water tank with fresh, cold water and reinsert the tank.

6 Display messages

Message	Cause/Result	Action
'Fill water tank'	The water tank is empty. You cannot prepare any products.	▶ Fill the water tank (see Chapter 3 'Daily operation – Filling the water tank').
'Empty coffee grounds container'	The coffee grounds container is full. You cannot prepare any products.	▶ Empty the coffee grounds container and the drip tray (see Chapter 3 'Daily operation – Daily maintenance').
'Drip tray not fitted'	The drip tray is not inserted correctly or is not inserted at all. You cannot prepare any products.	▶ Fit the drip tray.
'Fill bean container'	The bean container is empty. You cannot prepare any speciality coffees, but you can prepare hot water and milk.	▶ Fill the bean container (see Chapter 1 'Preparing and using for the first time – Filling the bean container').
'Rinse the milk system'	The JURA requests a milk system rinse.	▶ Perform milk system rinsing (see Chapter 5 'Maintenance – Rinsing the fine foam frother').
The filter symbol at the bottom of the display lights up red.	The filter cartridge no longer works.	▶ Replace the CLARIS Smart filter cartridge (see Chapter 5 'Maintenance – Changing the filter').
'Clean machine'	The JURA is prompting you to clean it.	▶ Perform cleaning (see Chapter 5 'Maintenance – Cleaning the machine').
'Decalcify machine'	The JURA is prompting you to descale it.	▶ Perform descaling (see Chapter 5 'Maintenance – Descaling the machine').
'Too hot'	The system is too hot to start a maintenance programme.	▶ Wait for several minutes until the system has cooled or prepare a speciality coffee or hot water.

7 Troubleshooting

Problem	Cause/Result	Action
Insufficient foam is produced when the milk is frothed or milk sprays out of the fine foam frother.	The fine foam frother is dirty.	<ul style="list-style-type: none"> ▶ Clean the fine foam frother (see Chapter 5 'Maintenance – Cleaning the fine foam frother'). ▶ Dismantle and rinse the fine foam frother (see Chapter 5 'Maintenance – Dismantling and rinsing the professional fine foam frother').
Coffee only comes out in drips when it is being prepared.	The coffee is ground too finely and obstructs the system. The water hardness may not have been correctly set.	<ul style="list-style-type: none"> ▶ Set the grinder to a coarser setting (see Chapter 2 'Preparation – Adjusting the grinder'). ▶ Perform descaling (see Chapter 5 'Maintenance – Descaling the machine').
'Fill water tank' is displayed although the water tank is full.	There is a lot of limescale in the water tank.	<ul style="list-style-type: none"> ▶ Descale the water tank (see Chapter 5 'Maintenance – Descaling the water tank').
Little or no water or steam comes out of the fine foam frother. The pump is very quiet.	The connector of the fine foam frother may be blocked by milk residues or limescale fragments loosened during descaling.	<ul style="list-style-type: none"> ▶ Remove the fine foam frother. ▶ Unscrew the black connector with the aid of the hexagonal hole on the measuring spoon for ground coffee. ▶ Clean the connector thoroughly. ▶ Screw the connector back on by hand. ▶ Carefully tighten it using the hexagonal hole on the measuring spoon, turning by no more than a quarter of a rotation.
Grinder is making a very loud noise.	There are foreign objects in the grinder.	<ul style="list-style-type: none"> ▶ Contact customer support in your country (see Chapter 11 'JURA contact details / Legal information').
'ERROR 2' or 'ERROR 5' is displayed.	If the machine has been exposed to the cold for a long period of time, heating may be disabled for safety reasons.	<ul style="list-style-type: none"> ▶ Warm the machine at room temperature.

Problem	Cause/Result	Action
Other 'ERROR' messages are displayed.	-	<ul style="list-style-type: none"> ▶ Switch the JURA off with the On/Off button . Contact customer support in your country (see Chapter 11 'JURA contact details / Legal information').

- i** If you were unable to solve the problem, contact customer support in your country (see Chapter 11 'JURA contact details / Legal information').

8 Transport and environmentally friendly disposal


Transport / Emptying the system

Keep the packaging for your JURA. It should be used to protect the machine during transport.

In order to protect the JURA from frost during transport, the system must be emptied.



Precondition: The speciality coffees with milk are displayed.

- ▶ Remove the milk pipe from the fine foam frother.
 - ▶ Place a receptacle under the fine foam frother.
 - ▶ Press the **'Milk foam'** button.
'Milk foam' appears and hot steam is discharged from the fine foam frother.
 - ▶ Remove and empty the water tank.
 - ▶ Press the **'>'** button several times until **'Amount of milk' / '60 sec.'** is displayed.
Steam will continue to be discharged from the fine foam frother until the system is empty.
'Fill water tank'
 - ▶ Press the On/Off button .
- Your JURA is switched off.

Disposal

Please dispose of old machines in an environmentally neutral way.



Old machines contain valuable, recyclable materials which should be recycled. Please therefore dispose of old machines via suitable collection systems.

9 Technical data

Voltage	220–240 V ~, 50 Hz
Power	1450 W
Conformity mark	CE
Pump pressure	static, max. 15 bar
Holding capacity of water tank (without filter)	1.9 l
Holding capacity of bean container	280 g
Holding capacity of coffee grounds container	max. 16 portions
Cable length	approx. 1.1 m
Weight	approx. 9.8 kg
Dimensions (W × H × D)	28.0 × 35.1 × 43.9 cm

Information for testers (repeat test in accordance with DIN VDE 0701-0702): The central grounding point (CGP) is located on the underside of the machine, right next to the mains cable's connection point.

10 Index

A

- Addresses 44
- Adjusting the product settings 22
- Aroma preservation cover
 - Bean container with aroma preservation cover 4
- Automatic switch-off 23

B

- Bean container
 - Bean container with aroma preservation cover 4
 - Cleaning 34
 - Filling 10
- Bus bar
 - Technical data 39
- Button
 - On/Off button 4

C

- Cappuccino 15
- Central grounding point 39
- CLARIS Smart filter cartridge
 - Change 30
 - Insert 29
- Cleaning
 - Bean container 34
 - Fine foam frother 27
 - Machine 31
- Coffee 16
 - Two coffees 16
- Coffee grounds container 4
- Coffee spout
 - Height-adjustable coffee spout 4
- Connector System® 4
- Consistency of grind
 - Adjusting the grinder 19
 - Grinder adjustment switch 4
- Contact details 44
- Cover
 - Filler funnel for ground coffee 4
 - Water tank 4
- Cup grille 4
- Customer support 44

D

- Descaling
 - Machine 32
 - Water tank 34
- Display 5
- Display messages 35
- Disposal 38
- Double product 16
- Drip tray 4

E

- Emptying the system 38
- Errors
 - Troubleshooting 36
- Espresso 16
 - Two espressi 16

F

- Filler funnel
 - Filler funnel for ground coffee 4
- Filling
 - Bean container 10
 - Water tank 20
- Filter
 - Change 30
 - Insert 29
- Fine foam frother
 - Cleaning 27
 - Dismantling and rinsing 29
 - Professional fine foam frother 4
 - Rinsing 26
- First-time use 11
 - With filter cartridge activation 12
 - Without filter cartridge activation 13
- Flat white 15

G

- Grinder adjustment switch 4
- Ground coffee 17
 - Measuring spoon for ground coffee 5
- Grounding point 39

H

- Height-adjustable coffee spout 4
- Hotline 44
- Hot water 19
- Hot-water nozzle 5

I

- Instant coffee
 - Ground coffee 17
- Internet 10

J

- JURA
 - Contact details 44
 - Internet 10

L

- Language 25
- Latte macchiato 15

M

- Machine
 - Cleaning 31
 - Descaling 32
 - Regular maintenance 21
 - Rinsing 26
 - Setting up 10
 - Switching off 21
 - Switching on 20
- Mains cable 4
- Maintenance 26
 - Daily maintenance 20
 - Regular maintenance 31
- Measuring spoon for ground coffee 5
- Messages, display 35
- Milk
 - Connecting milk 14
- Milk foam 17
- Milk system rinsing 24, 26

P

- Permanently setting the water for the cup size 18
- Permanent settings in programming mode 22
- Preparation 15
 - Cappuccino 15
 - Coffee 16
 - Espresso 16
 - Flat white 15
 - Ground coffee 17
 - Hot water 19

- Latte macchiato 15
- Milk foam 17
- Ristretto 16
- Two coffees 16
- Two espressi 16
- Two ristretti 16
- Two speciality coffees 16

Problems

- Troubleshooting 36
- Product settings
 - Adjusting 22
- Professional fine foam frother 4
 - Dismantling and rinsing 28
- Programming mode 22
 - Automatic switch-off 23
 - Language 25
 - Milk system rinsing 24
 - Setting the water hardness 24
 - Unit for amount of water 25
- Proper use 6

R

- Regular maintenance 21
- Rinses
 - Milk system rinsing 26
- Rinsing
 - Fine foam frother 26
 - Machine 26
- Ristretto 16
 - Two ristretti 16

S

- Safety 6
- Safety information 6
- Settings
 - Permanent settings in programming mode 22
- Setting up
 - Setting up the machine 10
- Short operating instructions 10
- Switching off 21
- Switching on 20
- Switch-off
 - Automatic switch-off 23
- Symbol description 3

T

- Technical data 39
- Tel 44
- Transport 38
- Troubleshooting 36
- Two products 16

U

- Unit for amount of water 25
- Use, First-time 11

W

- Water hardness
 - Determining the water hardness 10
 - Setting the water hardness 24
- Water tank 4
 - Descaling 34
 - Filling 20
- Website 10

11 JURA contact details / Legal information

JURA Elektroapparate AG
Kaffeeweltstrasse 10
CH-4626 Niederbuchsiten
Tel. +41 (0)62 38 98 233

@ You will find additional contact details for your country at
www.jura.com.

- Directives** The machine complies with the following directives:
- 2014/35/EU – Low Voltage Directive
 - 2014/30/EU – Electromagnetic Compatibility
 - 2009/125/EC – Ecodesign Directive
 - 2011/65/EU – RoHS Directive

Technical changes We reserve the right to make technical changes. The diagrams used in these instructions for use are for illustration purposes only and do not represent the original colours of the machine. Some details of your JURA may vary.

Feedback Your opinion is important to us! Use the contact details at www.jura.com.

Copyright The instructions for use contain information which is protected by copyright. It is not permitted to photocopy these instructions for use or translate them into another language without the prior written consent of JURA Elektroapparate AG.